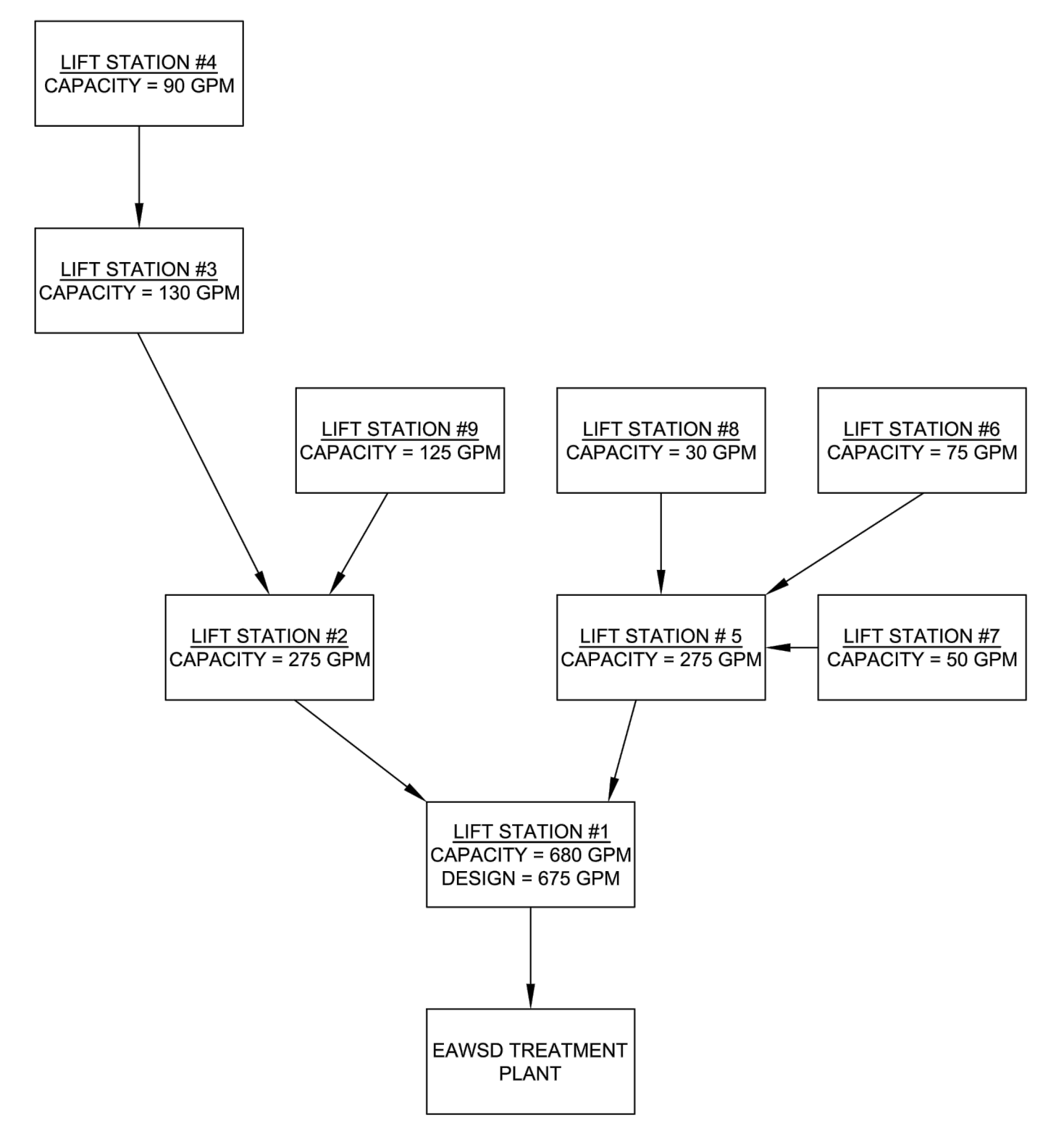
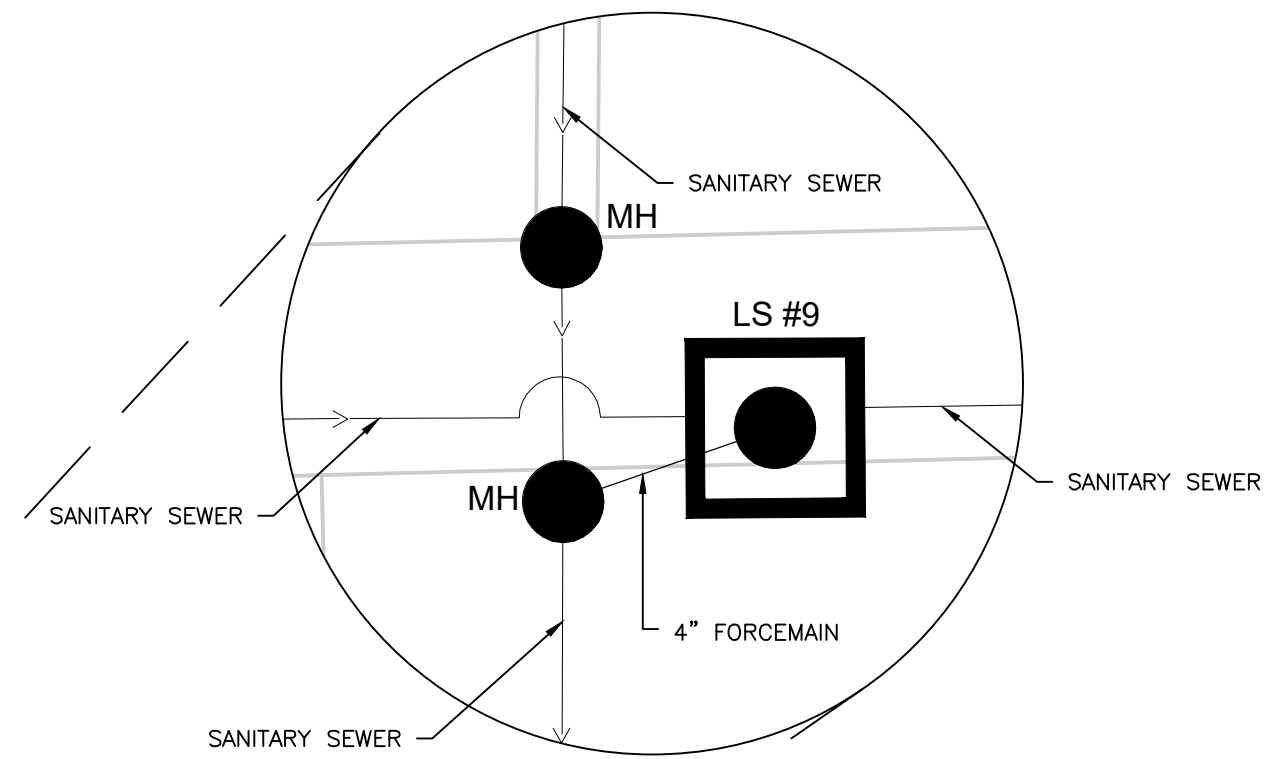
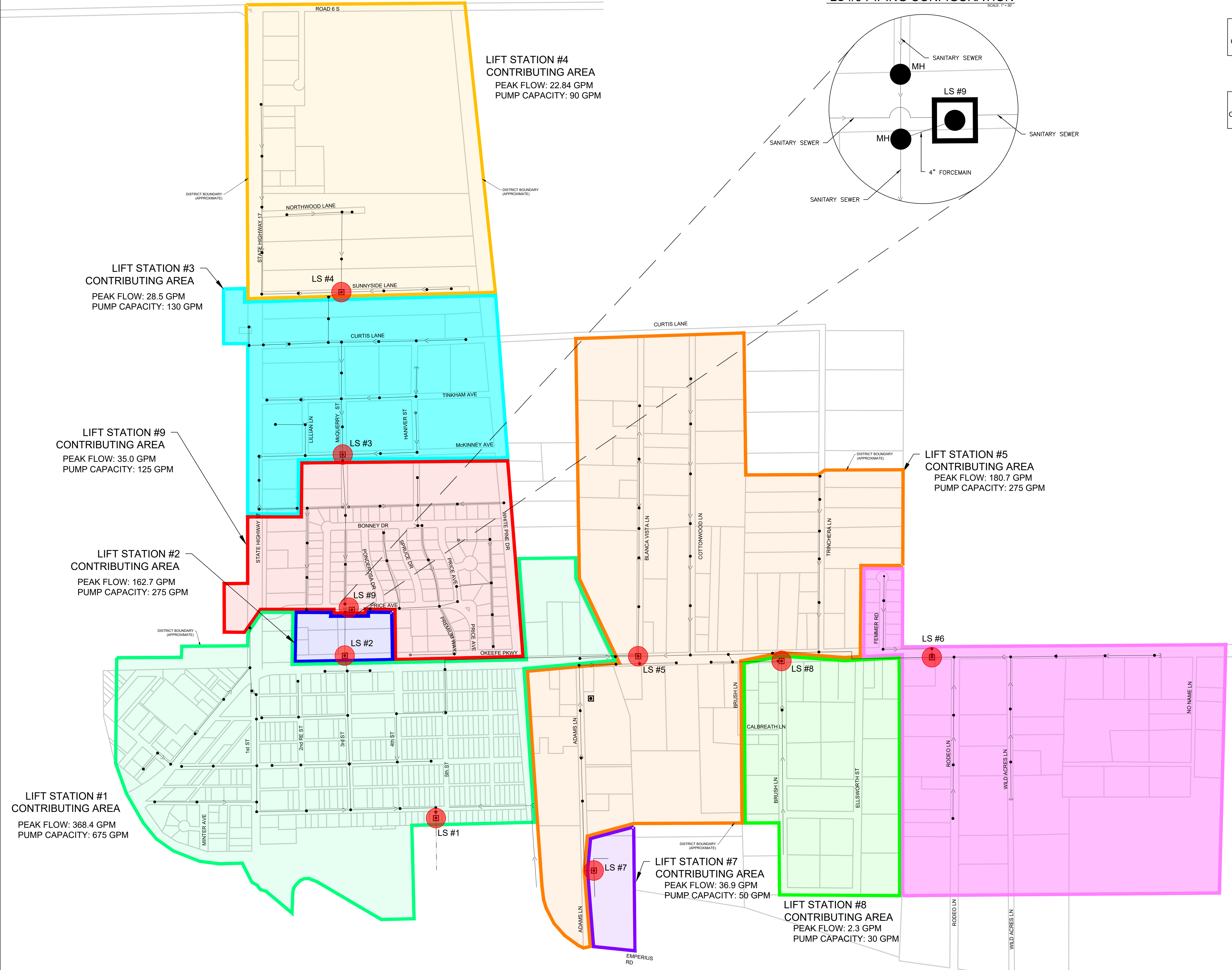


**LS #9 PIPING CONFIGURATION**

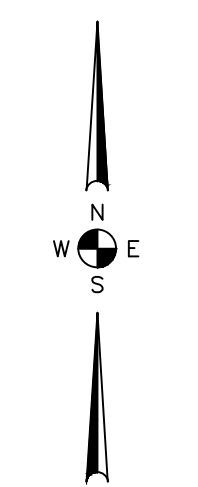


**EAWS LIFT STATIONS FLOW DIAGRAM**

LIFT STATION REPLACEMENT PRIORITIES		
PRIORITY	LIFT STATION #	LOCATION
1	3	MCKINNEY & MCQUERY
2	6	RODEO LANE
3	5	BLANCA VISTA LANE
4	4	SUNNY SIDE LANE
5	8	BRUSH LANE
6	9	PRICE AVENUE
7	7	ADAMS LANE



LIFT STATION #6  
CONTRIBUTING AREA  
PEAK FLOW: 69.0 GPM  
PUMP CAPACITY: 75 GPM



0 400' 800'  
SCALE: 1" = 400'

EAST ALAMOSA WATER AND SANITATION DISTRICT  
2022 LIFT STATION ANALYSIS

**RG AND ASSOCIATES, LLC**  
4885 Ward Road, Suite 100 • Wheat Ridge, CO • 80033  
303-293-8107 • 303-293-8106 (fax) • www.rgengineers.com

LIFT STATIONS - CONTRIBUTING AREAS	
JOB NUMBER:	1017.0010
DATE:	AUGUST 2022
SCALE:	1" = 400'
SHEET NO.:	1 of 1